



APPLICATION NOTE

APP #113 - Upgrading MCS-CONNECT

Revision History

Date	Author	Description
03-30-16	DEW	Setup Application note
02-22-17	DEW	Additions remove setup file on desktop and trash
10-03-19	DEW	Edits from Bret

UPGRADING MCS-CONNECT on MCS-TOUCHSCREENS

Any questions regarding this release, contact:
support@mcscontrols.com

Upgrading MCS-CONNECT on Touchscreen

NOTE: MAKE SURE YOU DOWNLOAD THE LINUX VERSION OF MCS-CONNECT FROM OUR WEBSITE AT:

<http://www.mcscontrols.com/software.html>

Download Latest MCS-CONNECT software



Call or email MCS for the password to download the latest **MCS-CONNECT LINUX VERSION** software.

Download to your laptop or computer's desktop or a location where you will be able to copy to a USB drive.

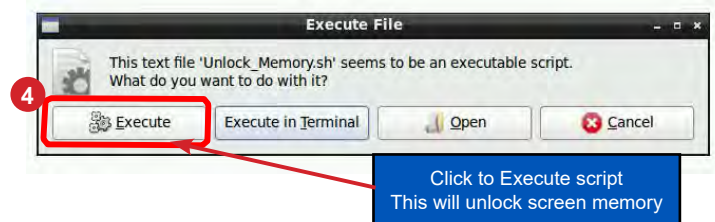
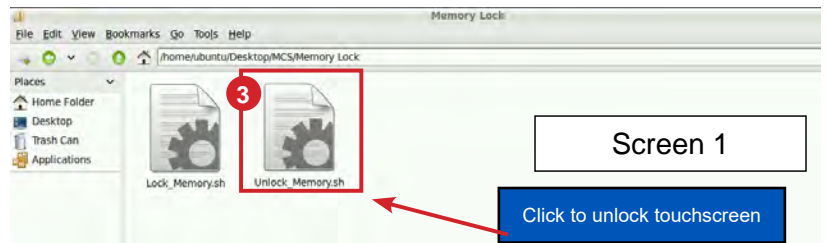
Start by Unlocking the Touchscreen.

1. Click on the 'MCS TOOLS' folder on the desktop, 'MEMORY LOCK' sub folder will appear when this file is opened..



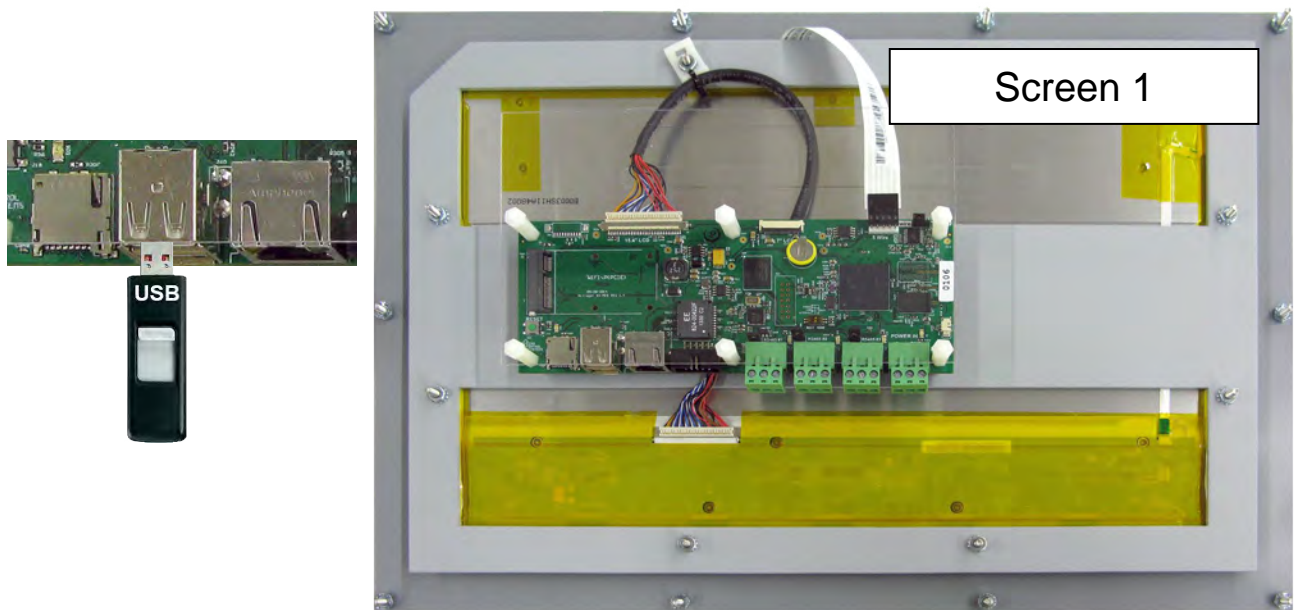
2. Double click on the 'Memory lock' folder
3. Double click on the 'Unlock_Memory.sh' icon

4. Next screen, click on 'Execute'
5. Touchscreen will perform a restart



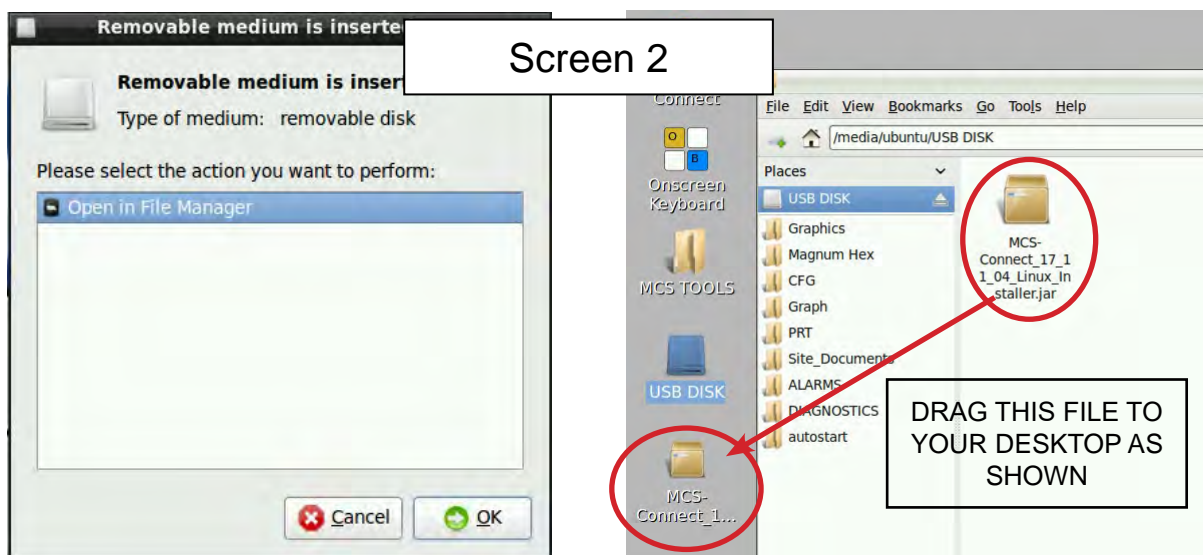
PLUG IN USB DRIVE AS SHOWN

On back of touchscreen, locate the USB PORT as shown on screen 2 and insert the USB drive with the new version of MCS-CONNECT.



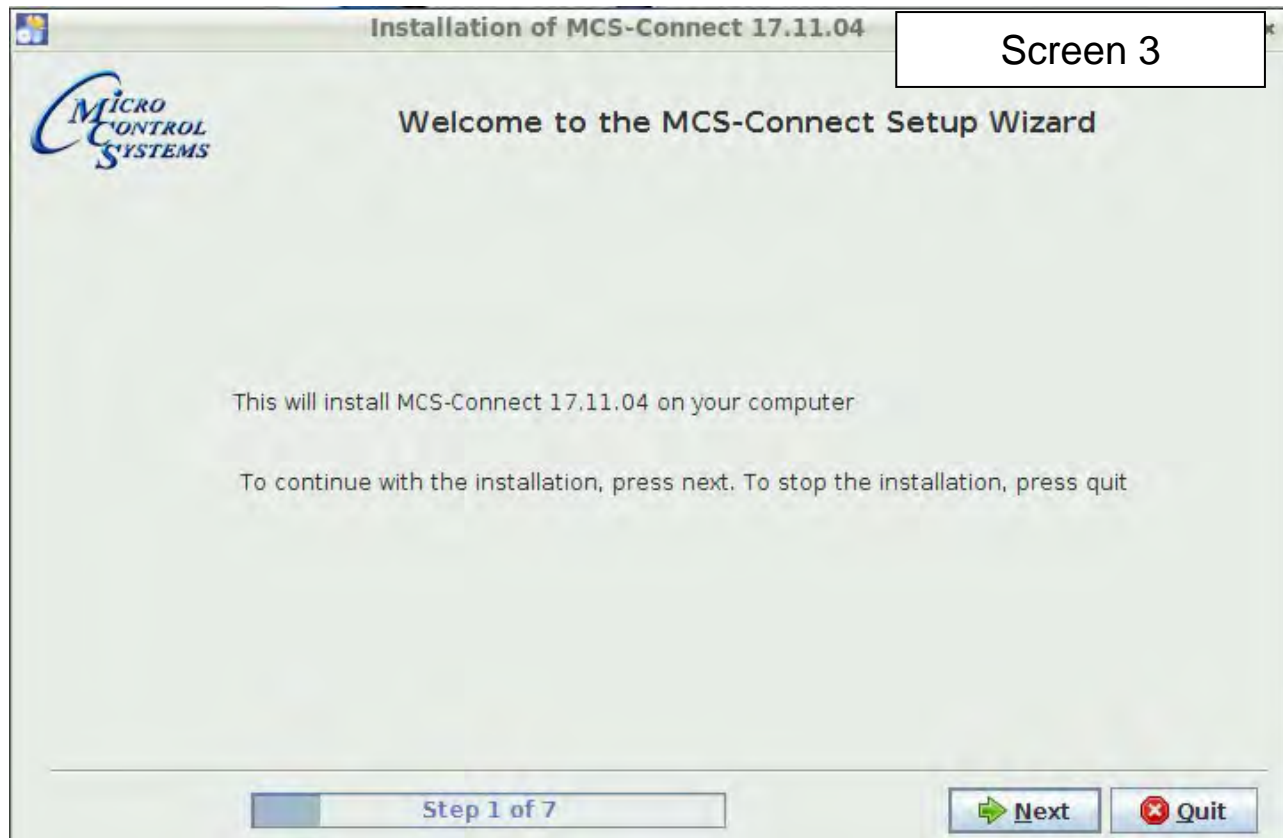
Copy the Updated File

1. After plugging in the USB drive, the following screen will appear, click ok to open in File Manager.
2. When the drive opens, **drag the 'MCS-CONNECT installation file' to the desktop.**

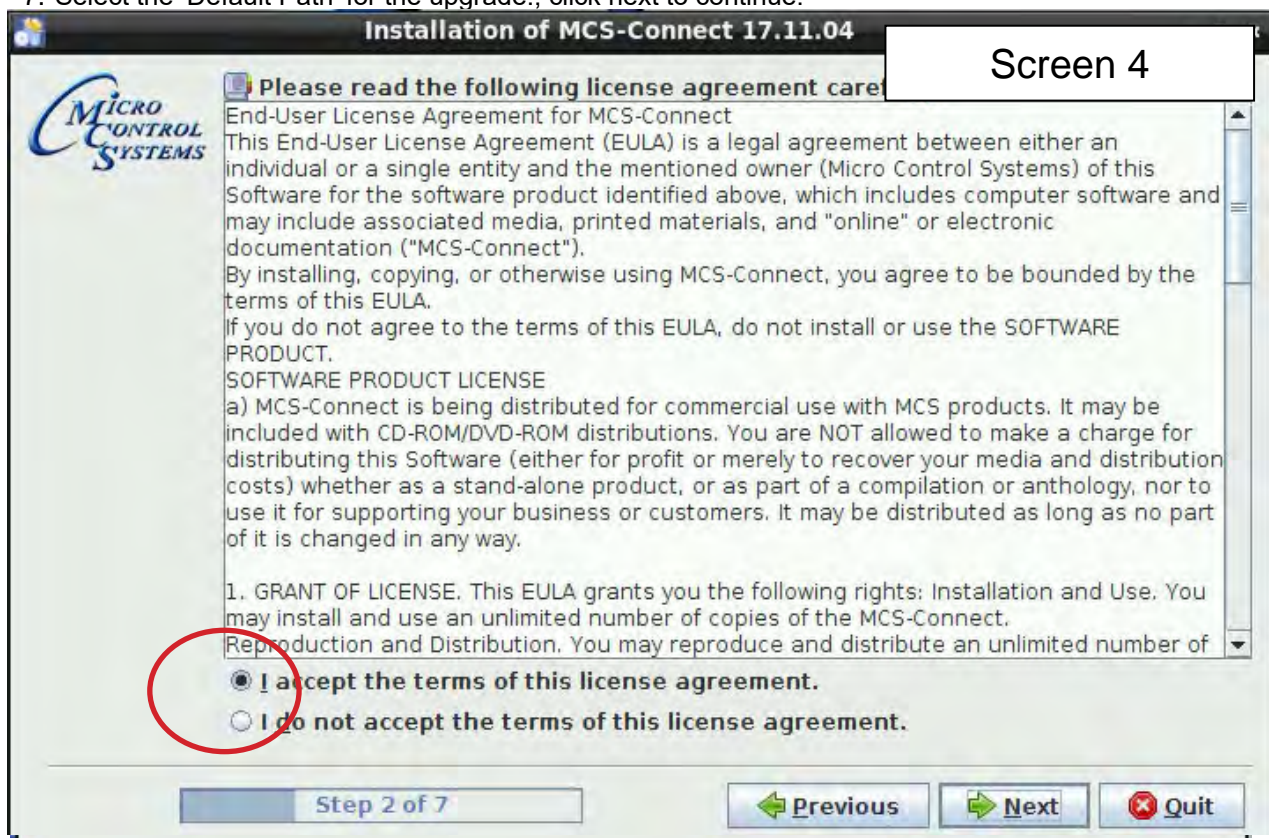


3. Close the screen so you can access the desktop.
4. Double click on the **'MCS-CONNECT installation file'** you just dragged to your desktop to upgrade.

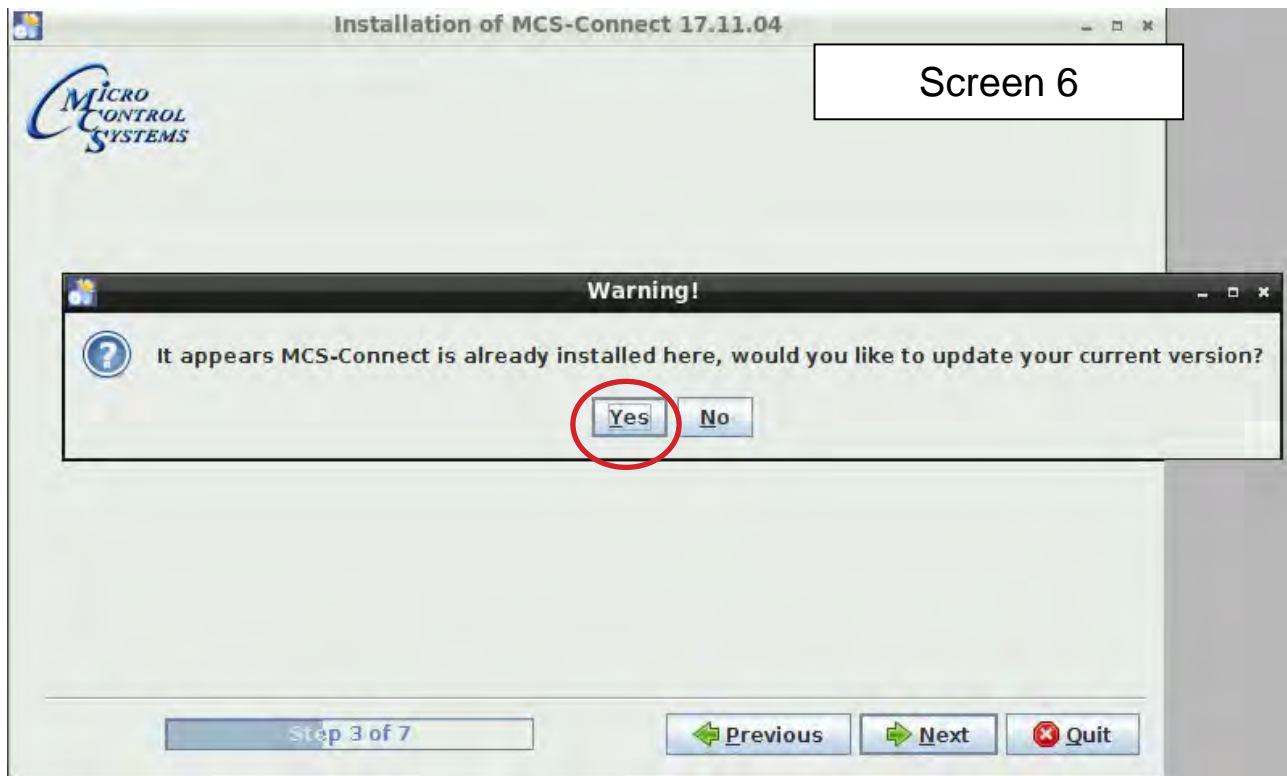
5. Click next to continue installing the new 'MCS-CONNECT installation



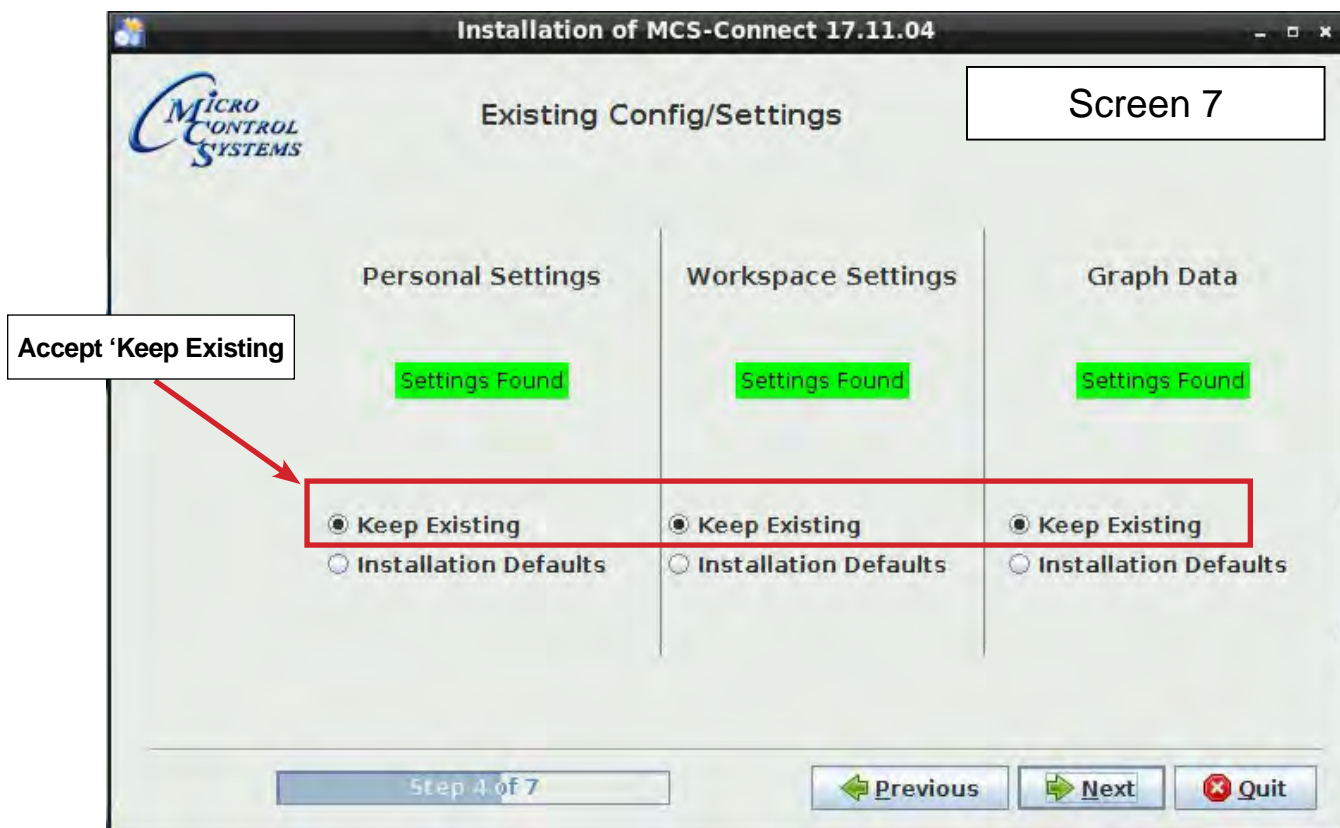
6. Accept the terms for the 'license agreement', click next to continue.
7. Select the 'Default Path' for the upgrade., click next to continue.



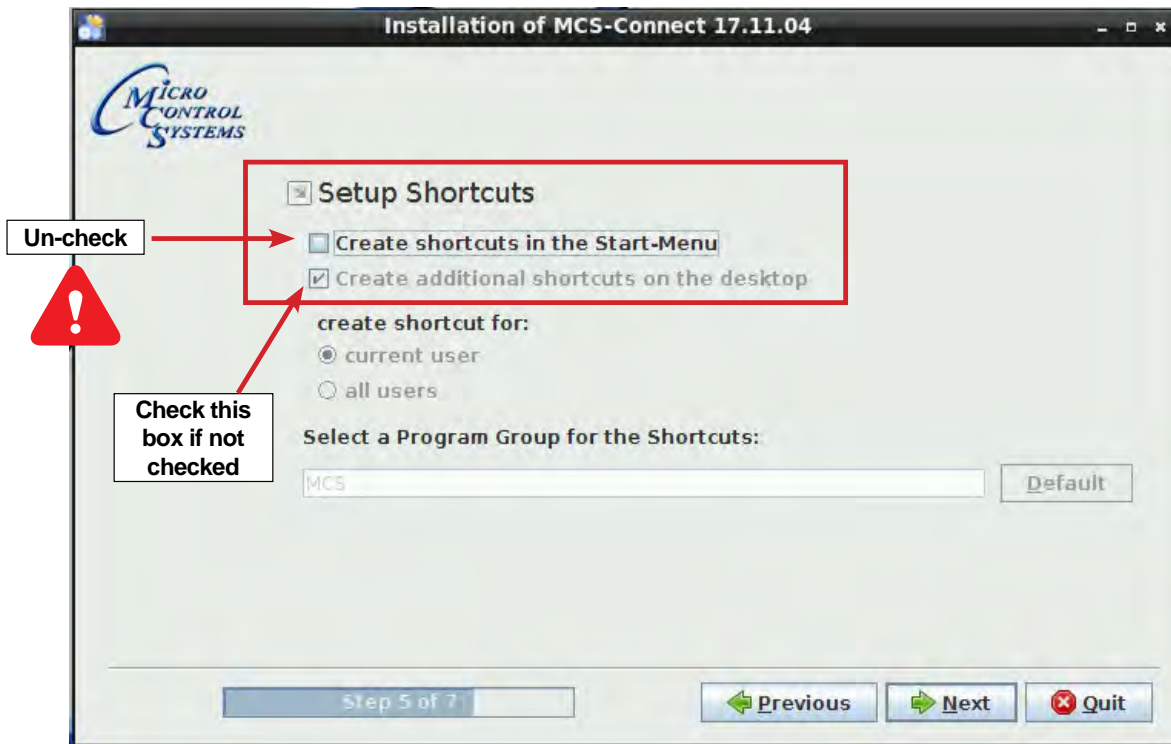
8. Click on 'YES' to overwrite the existing file, click next to continue.



9. Choose **Keep Existing Config/Setting**, click next to continue.

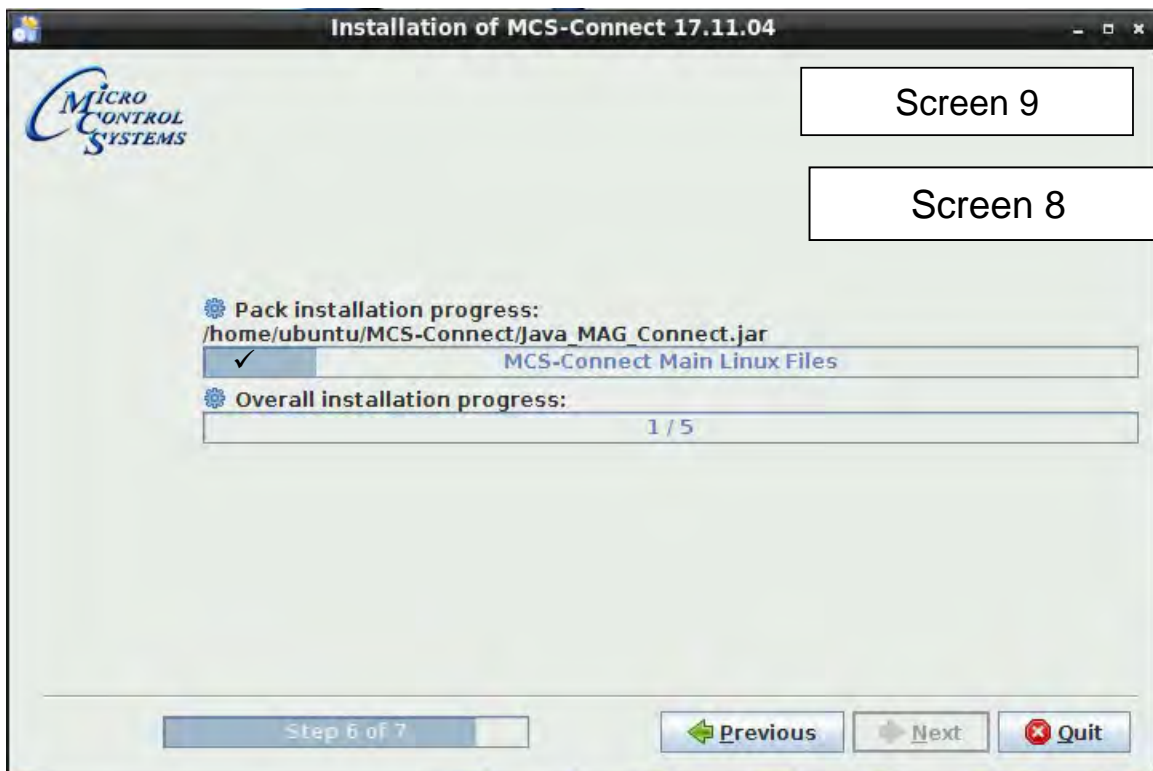


- Make sure to **Un-check** the box to 'Create shortcuts in the Start-Menu',

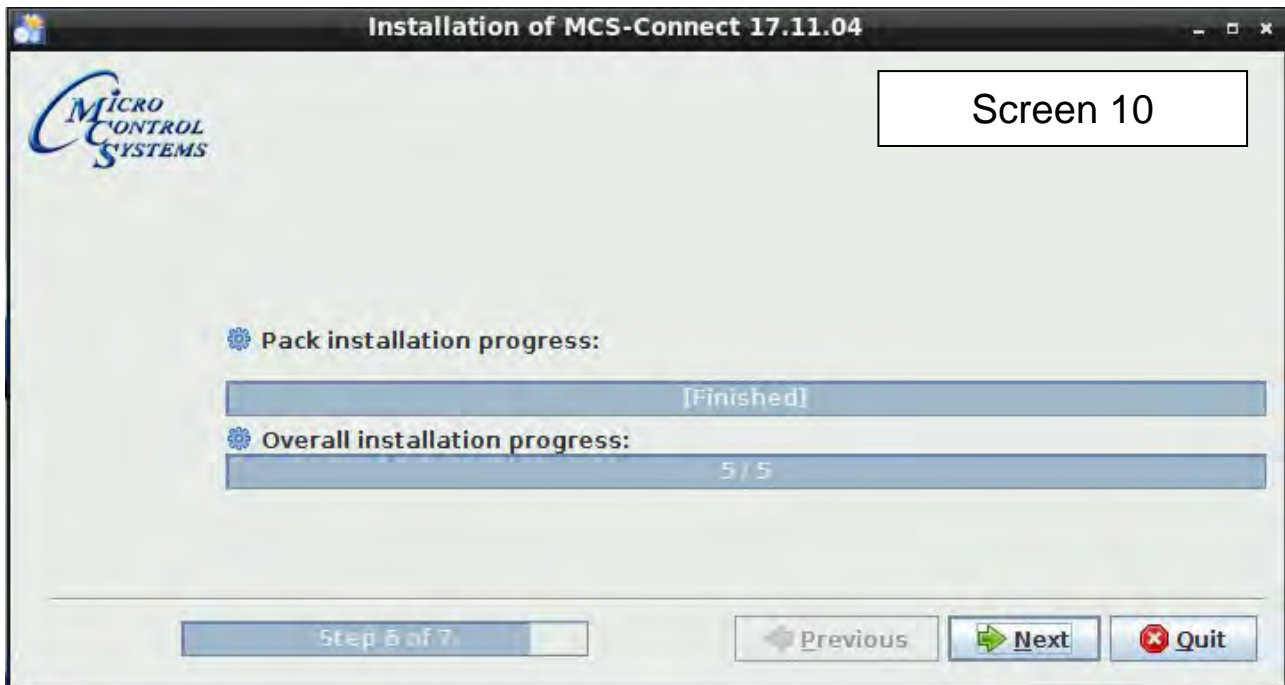


Check box 'Create additional shortcuts on the desktop', click next to continue.

- Next screen will show progress of installation.



12. Installation is complete, click next to continue.



13. Screen shows installation was successful, click 'DONE'.



14. Double click on the USB drive on the desktop, opens in file manager.



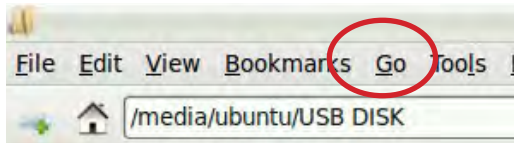
15. Click on '**ARROW**' to eject and remove from the back of the touchscreen.



16. While on the desktop, touch stylus pen to '**MCS-CONNECT** install file', select move to trash. Next double click '**MCS TOOLS**' on the desktop, opens in File Manager.



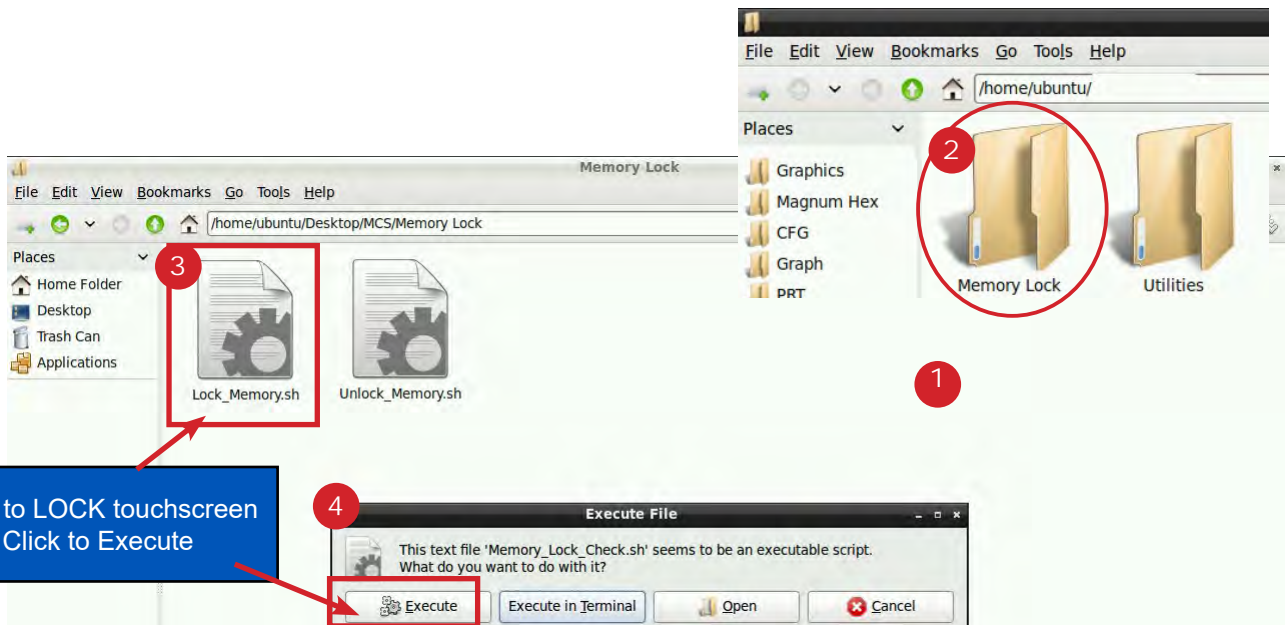
17. Click on the 'Go' button at the top and select trash can, Highlight the MCS CONNECT installer and select delete



Re-Locking Touchscreen



1. Double click the 'MCS TOOLS' Icon on the Desktop.
2. Double click 'Memory Lock' sub directory.
3. Double click 'Lock Memory'.
4. Click 'EXECUTE'. The touchscreen will reboot.



When the Lock Memory file is pressed it does an automatic reboot and autostarts MCS-Connect.

Check the top right corner of the desktop to make sure the touchscreen is locked.